

**Anti-M-CSF Antibody**  
**Rabbit polyclonal antibody to M-CSF**  
**Catalog # AP60189****Specification**

---

**Anti-M-CSF Antibody - Product Information**

Application	WB
Primary Accession	<a href="#">P09603</a>
Other Accession	<a href="#">P07141</a>
Reactivity	Human, Mouse, Rat
Host	Rabbit
Clonality	Polyclonal
Calculated MW	60179

**Anti-M-CSF Antibody - Additional Information****Gene ID** 1435**Other Names**

Macrophage colony-stimulating factor 1; CSF-1; M-CSF; MCSF; Lanimostim

**Target/Specificity**

KLH-conjugated synthetic peptide encompassing a sequence within the C-term region of human M-CSF. The exact sequence is proprietary.

**Dilution**

WB~~WB (1/500 - 1/1000)

**Format**

Liquid in 0.42% Potassium phosphate, 0.87% Sodium chloride, pH 7.3, 30% glycerol, and 0.09% (W/V) sodium azide.

**Storage**

Store at -20 °C. Stable for 12 months from date of receipt

**Anti-M-CSF Antibody - Protein Information****Name** CSF1**Function**

Cytokine that plays an essential role in the regulation of survival, proliferation and differentiation of hematopoietic precursor cells, especially mononuclear phagocytes, such as macrophages and monocytes. Promotes the release of pro-inflammatory chemokines, and thereby plays an important role in innate immunity and in inflammatory processes. Plays an important role in the regulation of osteoclast proliferation and differentiation, the regulation of bone resorption, and is required for normal bone development. Required for normal male and female fertility. Promotes reorganization of the actin cytoskeleton, regulates formation of membrane ruffles, cell adhesion and cell migration. Plays a role in lipoprotein clearance.

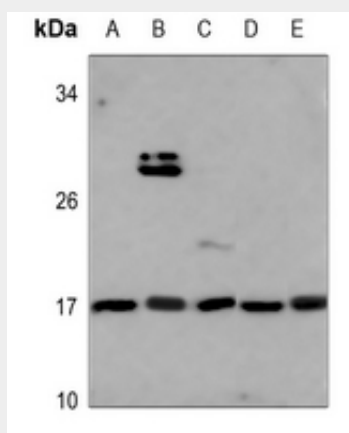
**Cellular Location**

Cell membrane; Single-pass type I membrane protein

**Anti-M-CSF Antibody - Protocols**

Provided below are standard protocols that you may find useful for product applications.

- [Western Blot](#)
- [Blocking Peptides](#)
- [Dot Blot](#)
- [Immunohistochemistry](#)
- [Immunofluorescence](#)
- [Immunoprecipitation](#)
- [Flow Cytometry](#)
- [Cell Culture](#)

**Anti-M-CSF Antibody - Images**

Western blot analysis of M-CSF expression in HEK293T (A), A549 (B), H1792 (C), mouse spleen (D), rat spleen (E) whole cell lysates.

**Anti-M-CSF Antibody - Background**

KLH-conjugated synthetic peptide encompassing a sequence within the C-term region of human M-CSF. The exact sequence is proprietary.